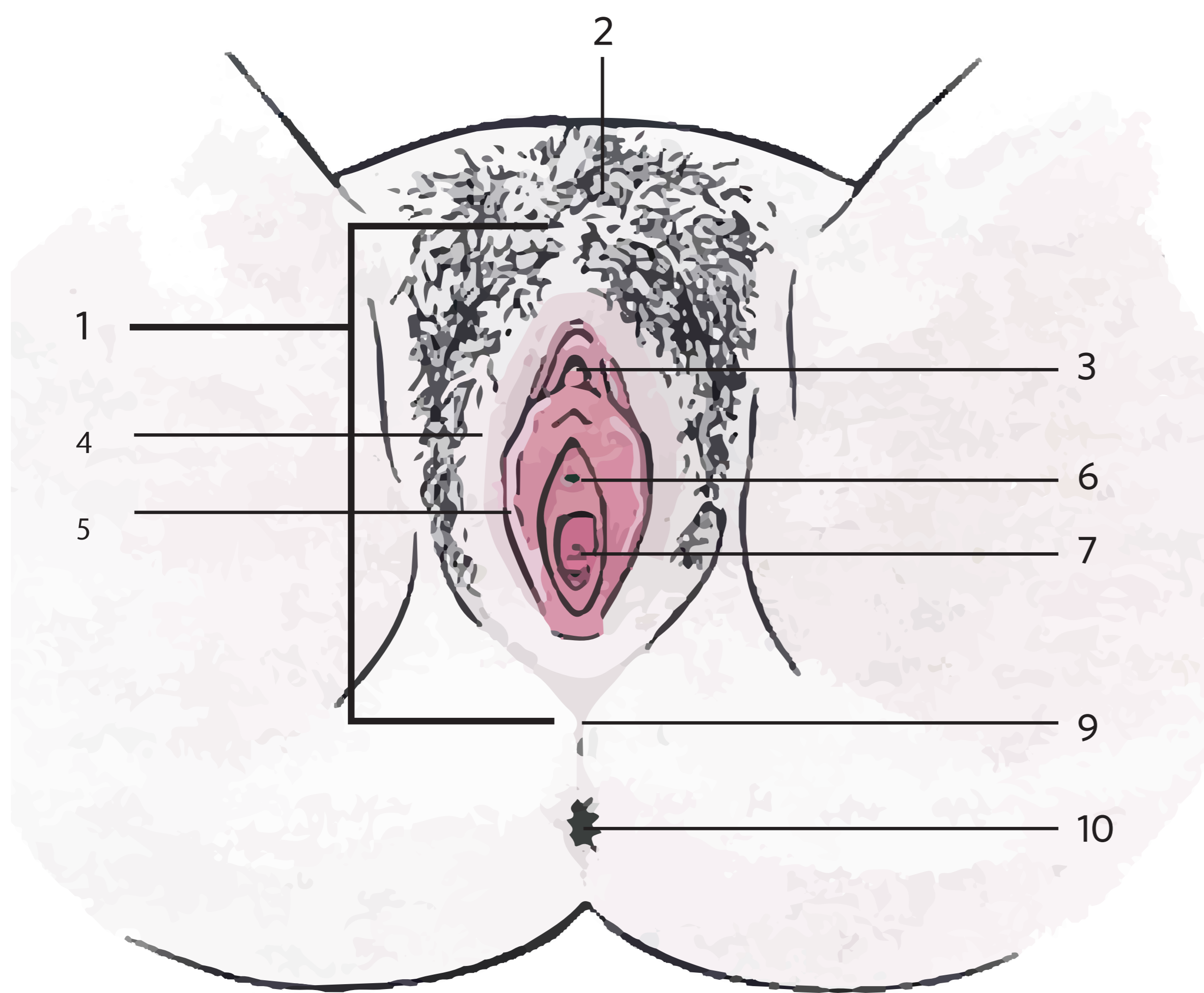
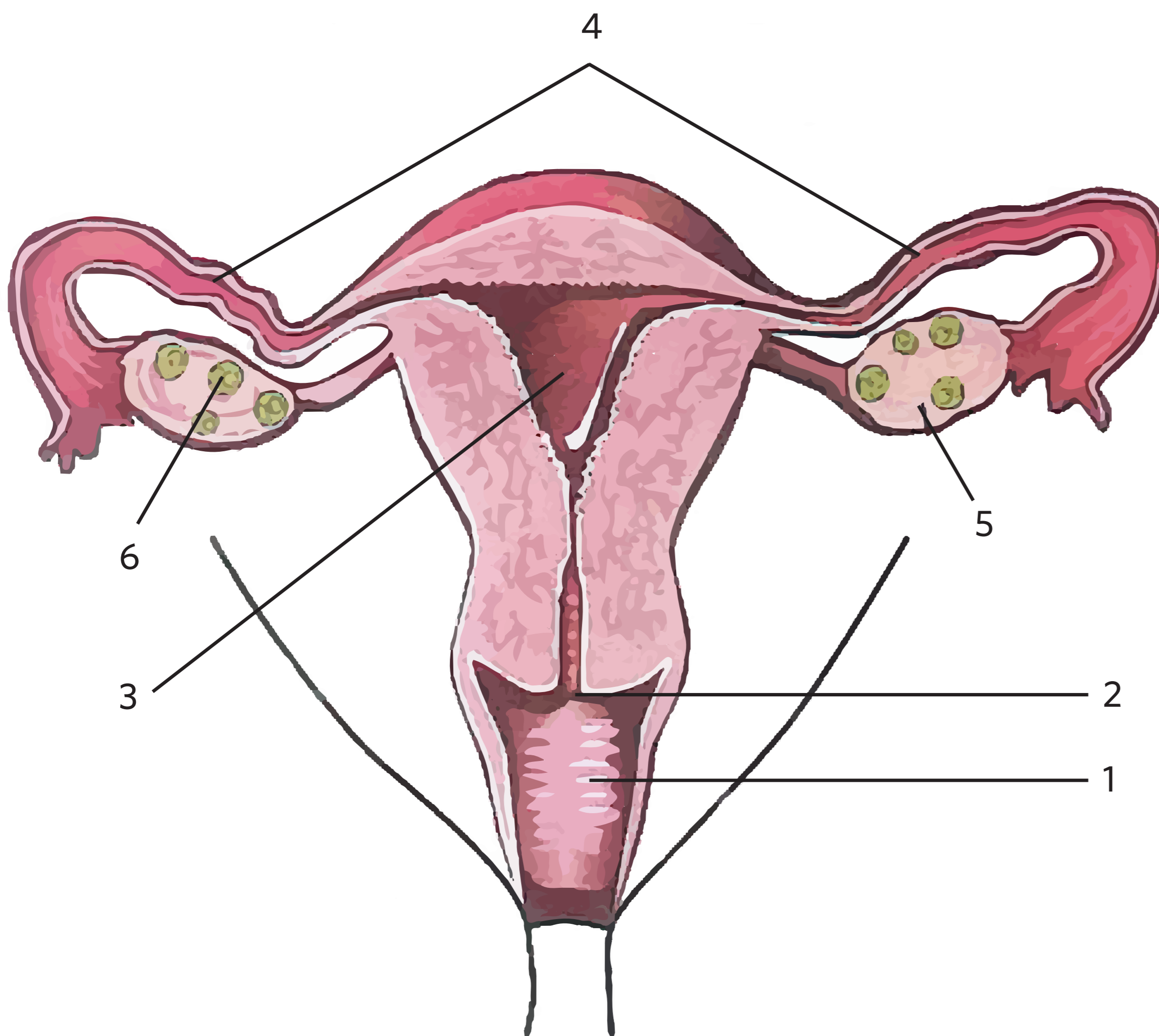


THE FEMALE SEXUAL AND REPRODUCTIVE SYSTEMS



- _____ Mons pubis (pubic mound)
- _____ Vaginal opening
- _____ Urethral opening
- _____ Inner lips or labia
- _____ Vulva
- _____ Anus
- _____ Outer lips or labia
- _____ Clitoris
- _____ Perineum

Hymen variations



- _____ Vagina
- _____ Ova
- _____ Uterus
- _____ Fallopian tubes
- _____ Ovary
- _____ Cervix